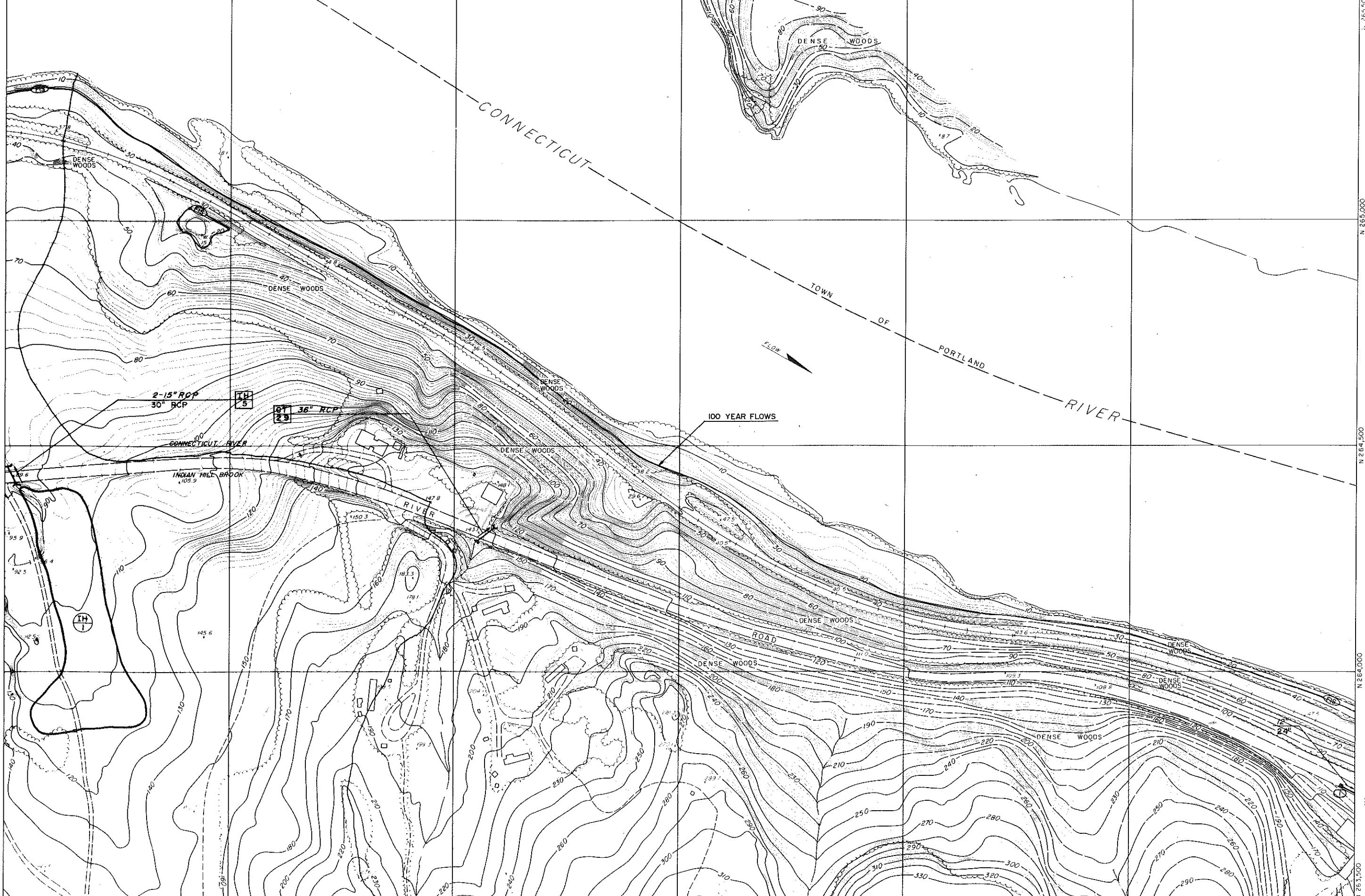


E 638,500 E 639,000 E 639,500 E 640,000 E 640,500 E 641,000 E 641,500



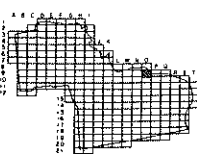
LEGEND

- Roads
- Drives (over 200ft)
- Railroads
- Buildings
- Endwalls and Culverts
- Catch Basin
- Manhole
- Rivers and Streams
- Fences (cross country)
- Walls, retaining, stone
- Trees
- Swamp and Marsh
- Lakes and Ponds
- Contours
- Depression
- Spot elevation
- Control, vertical
- Control, horizontal
- Bridges
- Towers



Michael J. ...
MAYOR

REVISION	DATE	BY



SHEET INDEX

JAMES P. PURCELL ASSOC.
Glastonbury, Ct.

SHEET NO. 09

MAP COMPILED USING PHOTOGRAMMETRIC METHODS BY

THIS MAP COMPLES WITH OR EXCEEDS NATIONAL MAP ACCURACY STANDARDS.

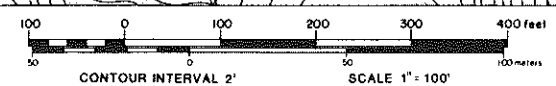
ANAL DATA PRODUCTION ASSOCIATION, INC.
PHOTOGRAPHIC SURVEY
MAY 1980

DASHED CONTOURS ARE SHOWN IN AREAS OBSCURED BY DENSE VEGETATION.
VERTICAL ACCURACY MAY BE REDUCED.

DRAINAGE AND WETLANDS INFORMATION PREPARED BY PURCELL ASSOC. 1981

DATE OF PHOTOGRAPHY APRIL 17, 1980

TOPOGRAPHIC MAP OF THE
CITY OF MIDDLETOWN, CONNECTICUT
WITH DRAINAGE SYSTEMS AND INLAND WETLANDS SUPERIMPOSED



500 FOOT GRID BASED ON CONNECTICUT RECTANGULAR GRID SYSTEM
NATIONAL GEODETIC VERTICAL DATUM OF 1929